

The Reference in Portable Metrology-grade 3D Scanners

HandySCAN 3D

BLACK Series



The HandySCAN 3D™ lineup is the industry standard in portable metrology-grade 3D scanners, and a proven and trusted patented technology. Optimized to meet the needs of design, manufacturing and metrology professionals, the BLACK Series provides the most effective and reliable way to acquire accurate 3D measurements of physical objects anywhere.

Portable, accurate and simple to use, the HandySCAN 3D|BLACK Series™ features unmatched speed that captures high-quality measurements. Since it performs regardless of environment changes or part movement, it represents the ideal tool for quality assurance and product development applications.



Reliable acceptance test
ISO 17025
accredited laboratory

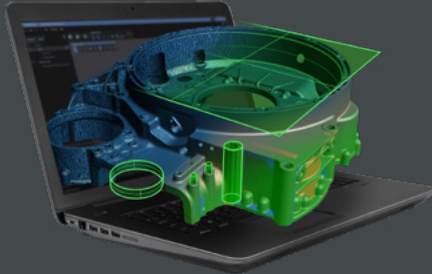
Made in North America
Most trusted & widely
used handheld
3D scanners

**Worldwide repairs
and customer support**

Powerful, Intuitive Software for Optimal User Experience

Creaform.OS™ is a powerful, integrated operating software that provides the best 3D measurement experience across all Creaform systems.

Featuring an intuitive interface, user-friendly tools, embedded content, and learning tutorials, the platform is designed to streamline onboarding for new users and overcome a lack of experience, ensuring they can fully leverage the capabilities of their 3D scanners and optical CMMs.



Live meshing

Integrated photogrammetry





Smart Surface Algorithm

Creaform Metrology Suite™ provides a comprehensive portfolio of application software modules designed for any metrology task.

- Scan-to-CAD**
 The most intuitive reverse engineering toolkit for transferring data extracted from 3D scans to any CAD platform.
- Inspection**
 Comprehensive and powerful software designed for efficient and accurate dimensional inspections.
- Automation**
 The most user-friendly and integrated programming platform for deploying automated quality control solutions.
- Dynamic Tracking**
 Enables simultaneous position and orientation of multiple objects in space and time.



Technical Specifications

	HandySCAN BLACK Elite™	HandySCAN BLACK+ Elite™
ACCURACY	0.025 mm (0.0010 in)	
VOLUMETRIC ACCURACY (based on part size)	0.020 mm + 0.040 mm/m (0.0008 in + 0.0005 in/ft)	0.020 mm + 0.040 mm/m (0.0008 in + 0.0005 in/ft) 0.020 mm + 0.015 mm/m (0.0008 in + 0.00018 in/ft) ⁽¹⁾
ACCEPTANCE TEST ⁽²⁾	Based on VDI/VDE 2634 part 3	Based on VDI/VDE 2634 part 3 & ISO 10360
MEASUREMENT CAPABILITIES (at a working distance of 0.3 m (1 ft))	 Pin	0.750 mm (0.0295 in)
	 Hole	1.250 mm (0.0492 in)
	 Step	0.025 mm (0.0010 in)
	 Wall	0.500 mm (0.0197 in)
LIGHT SOURCE ⁽³⁾	22 blue laser lines (+ 1 extra line)	30 blue laser lines (+ 1 extra line)
WORKING DISTANCE	200–450 mm (7.9–17.7 in)	200–750 mm (7.9–29.5 in)
PART SIZE RANGE (recommended)	0.05–4 m (0.15–13.1 ft)	
WEIGHT	0.94 kg (2.1 lb)	

(1) Performance obtained with scale bars included in the Accu+ Kit.

(2) Performance tests done in Creaform's ISO/IEC 17025 accredited calibration laboratories.

(3) Laser class: 2M (eye safe).



For an unparalleled experience connect with us at the nearest office located in Canada.

creaform3d.com

CREAFORM / AMETEK®



Authorized Distributor

ems3D

Offices Florida - Michigan
877-845-2700 - ems3d.com